

## 检测报告

编号: CANEC2221097702

日期: 2022年10月12日 第1页,共7页

客户名称: 格域新材料科技(江苏)有限公司  
客户地址: 江苏省常州市武进区虹西路199号一号楼

样品名称: PP降解粒子  
料号: T30S/648T  
以上样品及信息由客户提供。

SGS工作编号: CP22-054074 - GZ  
样品接收日期: 2022年09月30日  
检测周期: 2022年09月30日 - 2022年10月10日  
检测要求: 根据客户要求检测  
检测方法: 请参见下一页  
检测结果: 请参见下一页

## 检测结果概要:

检测要求	结论
欧洲委员会指令94/62/EC及其后续修正指令-总铅、镉、汞和六价铬的含量	符合
元素分析	见检测结果
卤素	见检测结果

通标标准技术服务有限公司广州分公司  
授权签名

李嘉欣

Jessie Li 李嘉欣  
批准签署人

scan to see the report



51DA23F7



SGS-CSTC Standards Technical Services Co., Ltd.  
Guangzhou Branch Testing Center Chemical Laboratory

Unless otherwise agreed in writing, this document is issued by the Company subject to its General Conditions of Service printed overleaf, available on request or accessible at <http://www.sgs.com/en/Terms-and-Conditions.aspx> and, for electronic format documents, subject to Terms and Conditions for Electronic Documents at <http://www.sgs.com/en/Terms-and-Conditions/Terms-e-Documents.aspx>. Attention is drawn to the limitation of liability, indemnification and jurisdiction issues defined therein. Any holder of this document is advised that information contained hereon reflects the Company's findings at the time of its intervention only and within the limits of Client's instructions, if any. The Company's sole responsibility is to its Client and this document does not exonerate parties to a transaction from exercising all their rights and obligations under the transaction documents. This document cannot be reproduced except in full, without prior written approval of the Company. Any unauthorized alteration, forgery or falsification of the content or appearance of this document is unlawful and offenders may be prosecuted to the fullest extent of the law. Unless otherwise stated the results shown in this test report refer only to the sample(s) tested.

Attention: To check the authenticity of testing / inspection report & certificate, please contact us at telephone: (86-755) 8307 1443, or email: [CN.Doccheck@sgs.com](mailto:CN.Doccheck@sgs.com)

198 Kazhu Road, Sciencetech Park Guangzhou Economic & Technology Development District, Guangzhou, China 510663

中国·广州·经济技术开发区科学城科珠路198号 邮编: 510663

t (86-20) 82155555 [www.sgs.com](http://www.sgs.com)

t (86-20) 82155555 [sgs.china@sgs.com](mailto:sgs.china@sgs.com)

## 检测报告

编号: CANEC2221097702

日期: 2022年10月12日 第2页,共7页

检测结果:

检测样品描述:

样品编号	SGS样品ID	描述
SN1	CAN22-210977.001	白色塑料颗粒

备注:

- (1) 1 mg/kg = 0.0001%
- (2) MDL = 方法检测限
- (3) ND = 未检出 (< MDL)
- (4) "-" = 未规定

### 欧洲委员会指令94/62/EC及其后续修正指令-总铅、镉、汞和六价铬的含量

检测方法: 参考GZTC CHEM-TOP-174-01, 采用ICP-OES & UV-Vis分析。

检测项目	限值	单位	MDL	001
镉 (Cd)	-	mg/kg	5	ND
铅 (Pb)	-	mg/kg	5	ND
六价铬 (CrVI)	-	mg/kg	8	ND
汞 (Hg)	-	mg/kg	5	ND
总量 (Pb + Cd + Cr VI + Hg)	100	mg/kg	-	ND
结论				符合

### 元素分析

检测方法: SGS内部方法 (GZTC CHEM-TOP-004-01, 参考EPA 3052: 1996), 采用ICP-OES进行分析。

检测项目	单位	MDL	001
铜(Cu)	mg/kg	5	ND
镍(Ni)	mg/kg	5	ND
镉 (Cd)	mg/kg	2	ND
铅(Pb)	mg/kg	2	ND
汞 (Hg)	mg/kg	2	ND
铬 (Cr)	mg/kg	2	ND
钼(Mo)	mg/kg	5	ND
硒 (Se)	mg/kg	10	ND
钴(Co)	mg/kg	5	ND
砷 (As)	mg/kg	10	ND



Unless otherwise agreed in writing, this document is issued by the Company subject to its General Conditions of Service printed overleaf, available on request or accessible at <http://www.sgs.com/en/Terms-and-Conditions.aspx> and, for electronic format documents, subject to Terms and Conditions for Electronic Documents at <http://www.sgs.com/en/Terms-and-Conditions/Terms-e-Documents.aspx>. Attention is drawn to the limitation of liability, indemnification and jurisdiction issues defined therein. Any holder of this document is advised that information contained hereon reflects the Company's findings at the time of its intervention only and within the limits of Client's instructions, if any. The Company's sole responsibility is to its Client and this document does not exonerate parties to a transaction from exercising all their rights and obligations under the transaction documents. This document cannot be reproduced except in full, without prior written approval of the Company. Any unauthorized alteration, forgery or falsification of the content or appearance of this document is unlawful and offenders may be prosecuted to the fullest extent of the law. Unless otherwise stated the results shown in this test report refer only to the sample(s) tested.

Attention: To check the authenticity of testing / inspection report & certificate, please contact us at telephone: (86-755) 8307 1443, or email: [CN.Doccheck@sgs.com](mailto:CN.Doccheck@sgs.com)

### 卤素

检测方法: 参考EN 14582:2016, 用 IC分析。

检测项目	单位	MDL	001
氟 (F)	mg/kg	50	ND

除非另有说明, 参照ILAC-G8:09/2019, 使用简单接受 ( $w=0$ ) 的二元判定规则进行符合性判定。  
除非另有说明, 此报告结果仅对检测的样品负责。本报告未经本公司书面许可, 不可部分复制。  
检测报告仅用于客户科研、教学、内部质量控制、产品研发等目的, 仅供内部参考。



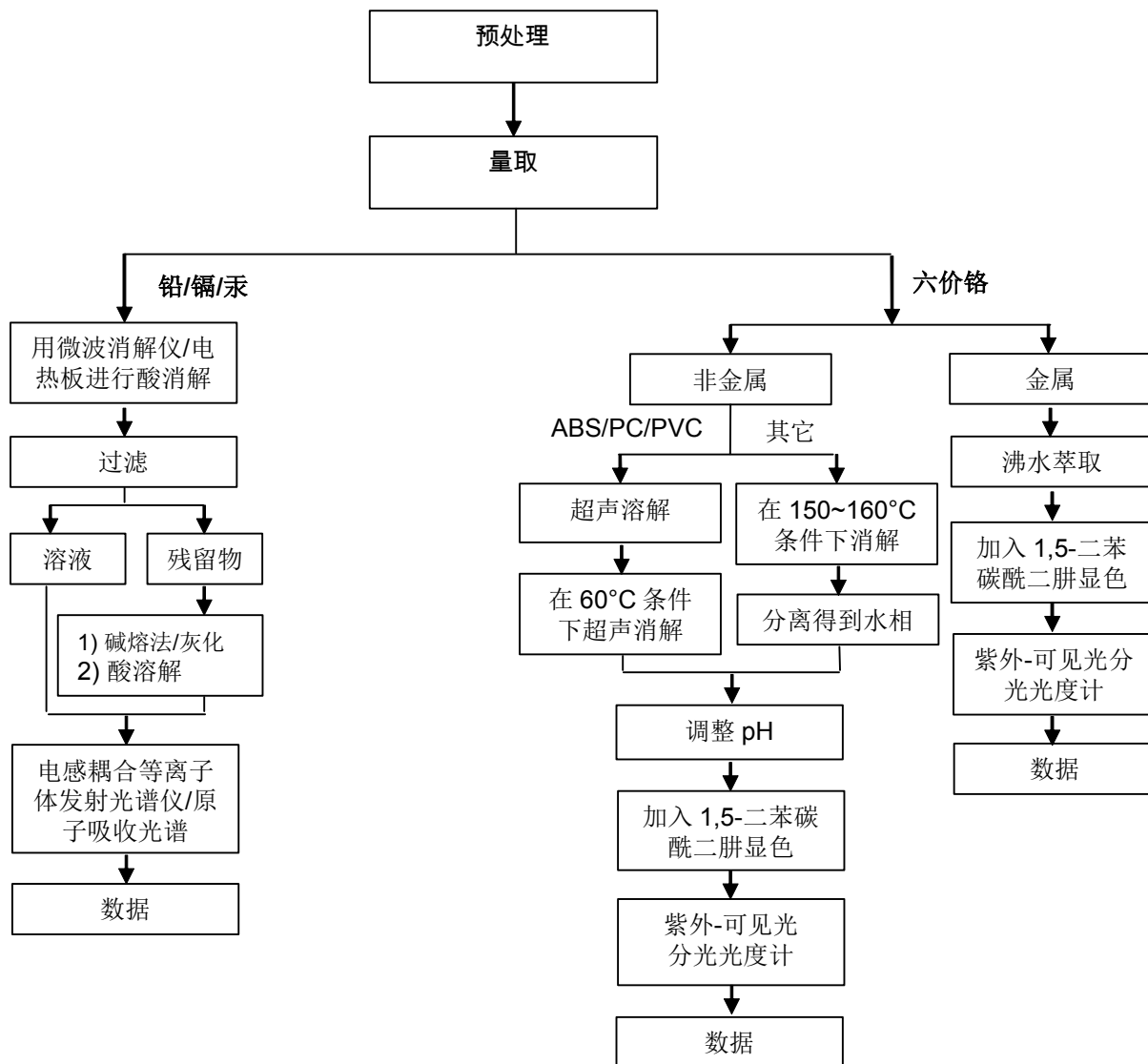
Unless otherwise agreed in writing, this document is issued by the Company subject to its General Conditions of Service printed overleaf, available on request or accessible at <http://www.sgs.com/en/Terms-and-Conditions.aspx> and, for electronic format documents, subject to Terms and Conditions for Electronic Documents at <http://www.sgs.com/en/Terms-and-Conditions/Terms-e-Documents.aspx>. Attention is drawn to the limitation of liability, indemnification and jurisdiction issues defined therein. Any holder of this document is advised that information contained hereon reflects the Company's findings at the time of its intervention only and within the limits of Client's instructions, if any. The Company's sole responsibility is to its Client and this document does not exonerate parties to a transaction from exercising all their rights and obligations under the transaction documents. This document cannot be reproduced except in full, without prior written approval of the Company. Any unauthorized alteration, forgery or falsification of the content or appearance of this document is unlawful and offenders may be prosecuted to the fullest extent of the law. Unless otherwise stated the results shown in this test report refer only to the sample(s) tested.

Attention: To check the authenticity of testing / inspection report & certificate, please contact us at telephone: (86-755) 8307 1443, or email: [CN.Doccheck@sgs.com](mailto:CN.Doccheck@sgs.com)

附件

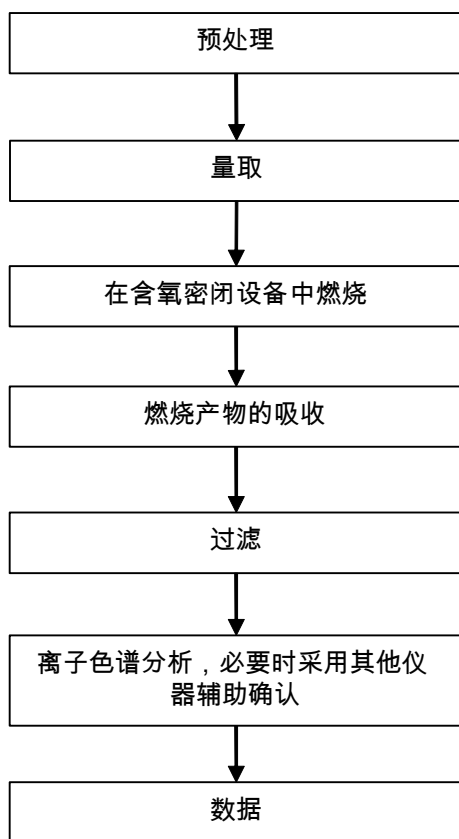
### Pb/Cd/Hg/Cr<sup>6+</sup> 检测流程图

1) 样品按照下述流程被完全消解（六价铬检测除外）。



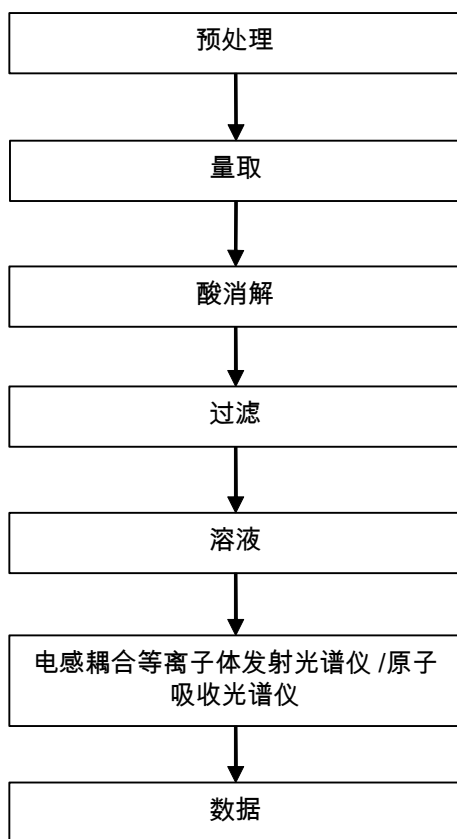
附件

卤素检测流程图



附件

### 元素检测流程图



Unless otherwise agreed in writing, this document is issued by the Company subject to its General Conditions of Service printed overleaf, available on request or accessible at <http://www.sgs.com/en/Terms-and-Conditions.aspx> and, for electronic format documents, subject to Terms and Conditions for Electronic Documents at <http://www.sgs.com/en/Terms-and-Conditions/Terms-e-Documents.aspx>. Attention is drawn to the limitation of liability, indemnification and jurisdiction issues defined therein. Any holder of this document is advised that information contained hereon reflects the Company's findings at the time of its intervention only and within the limits of Client's instructions, if any. The Company's sole responsibility is to its Client and this document does not exonerate parties to a transaction from exercising all their rights and obligations under the transaction documents. This document cannot be reproduced except in full, without prior written approval of the Company. Any unauthorized alteration, forgery or falsification of the content or appearance of this document is unlawful and offenders may be prosecuted to the fullest extent of the law. Unless otherwise stated the results shown in this test report refer only to the sample(s) tested.

Attention: To check the authenticity of testing / inspection report & certificate, please contact us at telephone: (86-755) 8307 1443, or email: [CN.Doccheck@sgs.com](mailto:CN.Doccheck@sgs.com)

样品照片:



此照片仅限于随SGS正本报告使用

\*\*\* 报告结束 \*\*\*

